

The logo for ÅSUB (Ålands statistik- och utredningsbyrå) features the letters 'ÅSUB' in a bold, white, sans-serif font. Above the letters are three vertical white bars of varying heights, resembling a stylized bar chart or a graphic element.

Ålands statistik- och utredningsbyrå



ÅLAND IN FIGURES

2026

Contents

	Page
Geographical data	2
Environment and energy	3
Population	4
Housing and construction	9
Primary industries	11
Manufacturing, trade and finance	13
Shipping	14
Tourism	15
Transport and communications	17
Map	18
Labour market	21
Income and taxes	23
Wages and salaries, CPI	24
National accounts	25
Enterprises	26
Public finance	28
Health and medical care	29
Social welfare	30
Education	32
Culture	34
Justice	35
Elections	35
About Åland	Inside back of the cover

Symbols and definitions

-	= Magnitude nil
0	= Magnitude less than half of unit employed
..	= Data not available or too uncertain for presentation
,	= Decimal separator
F	= Females
M	= Males
MEUR	= Million euro
Rural district	= Eckerö, Finström, Geta, Hammarland, Jomala, Lemland, Lumparland, Saltvik and Sund
Archipelago	= Brändö, Föglö, Kumlinge, Kökar, Sottunga and Vårdö

Population and Environment



Population 2025

30 836

**Share of population
aged 65+ 2025**

25 %



Dwellings 2024

17 348

Land area 1.1.2026

1 556 km²



Precipitation 2025

600 mm

Geographical data

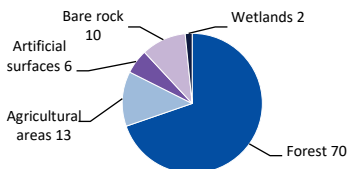
Geography

	Islands	Lakes
> 0,25 ha	6 757	379
< 0,25 ha, ca	20 000	1 500
Inhabited islands, ca	60	
Highest point	Orrdalsklint 129 m above sea level	

Area, km²

Total	13 325
Land	1 556
Water	11 769

Land area in %



Weather

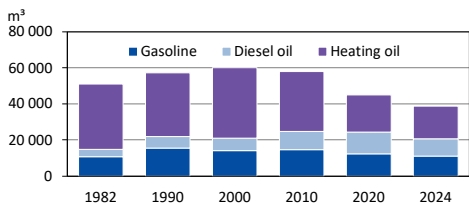
Month	Mean temperature C°		Precipitation, mm		Hours of sunshine 2025
	1991-2020	2025	1991-2020	2025	
Jan-Dec	6,5	7,8	628	600	1 903
Jan	-1,4	0,3	53	44	53
Feb	-2,4	-0,7	36	19	52
Mar	-0,2	3,0	34	6	155
Apr	4,0	5,6	31	42	202
May	9,2	8,0	37	19	280
Jun	13,6	13,5	56	34	289
Jul	17,0	18,8	48	52	298
Aug	16,3	15,3	65	71	228
Sep	11,9	14,2	64	74	172
Oct	6,9	8,0	74	105	104
Nov	3,1	4,2	68	57	48
Dec	0,4	3,7	62	79	22

Protected areas

	1980	2000	2010	2025
Nature reserves				
Land, hectares	616	1 475	2 537	3 729
- % of Åland	0,4	1,0	1,6	2,4
Water, hectares	6 292	8 605	32 947	40 530
- % of Åland	1,2	1,6	2,8	3,4 ¹⁾
Natural monuments,				
number	8	10	10	10
Bird protection				
areas, number	2	8	9	9

1) Åland's water area was changed in 2003

Consumption of oil products



Supply of electricity, GWh

	2000	2010	2020	2025
Total	242	300	302	351
Imports, Sweden	194	206	230	127
Imports, Finland	14	22	12	4
Own production	34	72	60	219
- oil	20	8	0	0
- wind power	15	53	57	202
- bio energy	..	11	0	1
- solar power ¹⁾	2	16
Export	-	47

1) Estimated based on the capacity of solar panels in use

Household waste 2024, kg per inhabitant	452
---	-----

Population 31.12

	1980	2000	2025
Åland	22 783	25 776	30 836
Females	11 509	13 076	15 572
Males	11 274	12 700	15 264
Region/Municipality			
Mariehamn	9 553	10 488	11 957
Rural district	10 778	12 940	16 889
Eckerö	685	830	961
Finström	2 052	2 299	2 625
Geta	471	478	512
Hammarland	1 196	1 351	1 644
Jomala	2 615	3 328	5 817
Lemland	954	1 585	2 139
Lumparland	302	377	371
Saltvik	1 564	1 679	1 802
Sund	939	1 013	1 018
Archipelago	2 452	2 348	1 990
Brändö	550	514	430
Föglö	608	595	512
Kumlinge	454	405	271
Kökar	304	296	211
Sottunga	149	129	101
Vårdö	387	409	465
Inhabitants per km ²	15,4	16,9	19,8

Dependency ratio 2025

85 %

Population by age 31.12, per cent

	1980	2000	2025
0-14	19,9	18,6	15,7
15-64	64,4	65,0	59,5
65+	15,6	16,4	24,8

Households 31.12

	1980	2000	2025
Households	9 037	11 074	14 693
Average size	2,5	2,3	2,1

Population

Population by country of birth 31.12, per cent

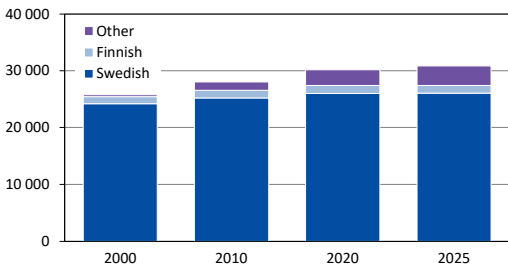
	2000	2010	2020	2025
Åland	72,5	66,9	62,4	60,6
Finland	19,8	19,6	18,5	17,5
Sweden	5,2	7,5	9,9	10,7
Other Nordic countries	0,3	0,3	0,3	0,3
Baltic countries	0,1	1,3	1,9	1,9
Other Europe	0,6	2,2	3,7	4,8
Asia	0,4	1,2	1,8	2,1
Other countries	0,5	0,6	0,9	1,2
Unknown	0,6	0,5	0,6	0,9

Finnish citizens 2025

87 %

Population by language 31.12.

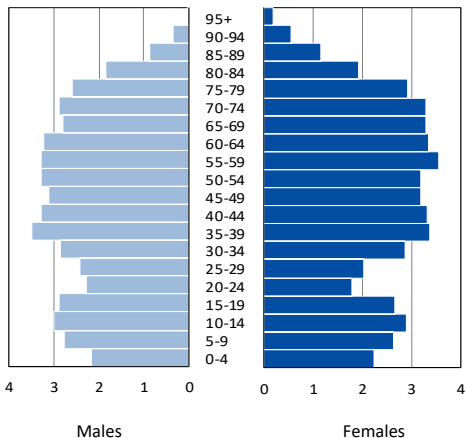
Persons



Population by religion 31.12, per cent

	2000	2010	2020	2025
Lutheran National Church	92,8	83,3	70,5	64,0
Other communities	0,5	0,9	1,3	1,2
Not member of a community	6,7	15,8	28,1	34,8

Population by age and sex 31.12.2025, per cent



Vital statistics

	2023	2024	2025
Births	259	218	251
Deaths	270	309	315
Excess of births	-11	-91	-64
Immigration	917	996	..
Emigration	734	769	..
Net migration	183	227	220
Correction	10	-23	53
Increase in population	182	113	209
Marriages	91	111	122
Divorces	60	64	58

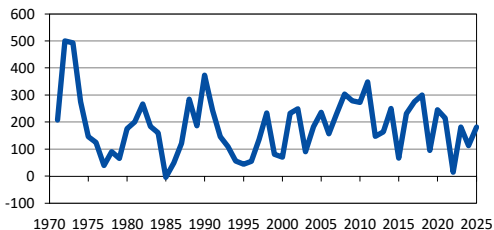
Note: Preliminary figures for 2025

Inhabitants born in home municipality 2025 33 %

Population

Increase in population 1971-2025

Persons

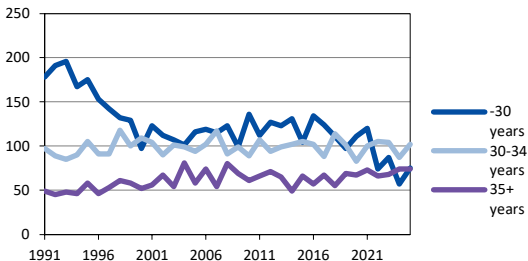


Immigration and emigration by country 2024

	Immi- gration	Emi- gration	Net
Total	996	769	227
Finland	345	331	14
Sweden	428	316	112
Other Nordic countries	9	18	-9
Rest of the world	214	104	110

Births by age of mother 1991-2025

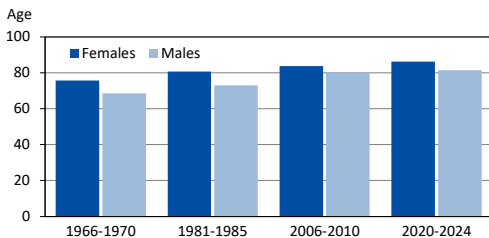
Number



Causes of death

	2010	2015	2024
Total	239	285	309
Circulatory system diseases	95	113	95
Tumors	76	81	100
Other diseases	61	80	101
Suicide	1	1	8
Accidents and violence	6	10	5

Average life expectancy



The 10 most common surnames, persons

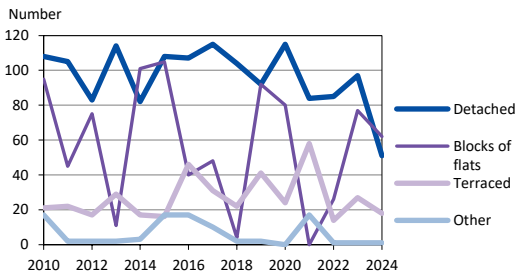
Rank	Name	2000	2020	2025
1	Karlsson	1 280	1 140	1 080
2	Eriksson	1 014	873	813
3	Mattsson	813	667	635
4	Jansson	783	656	611
5	Johansson	615	531	507
6	Andersson	525	501	483
7	Hägglom	277	295	295
8	Gustafsson	309	297	289
9	Lindholm	204	217	231
10	Söderlund	258	231	212

Most common first names 2025

Anna and Karl

Dwellings

	2000	2010	2020	2024
Dwellings	12 450	14 957	17 052	17 348
Type of buildings, %				
Detached	61,5	63,7	59,8	59,2
Terraced, block of flats	33,9	32,9	37,5	38,4
Other	4,7	3,4	2,7	2,4

Dwellings completed by type of building 2010-2024**Household dwelling units**

	2000	2010	2020	2024
Household dwelling units	11 074	12 894	14 243	14 605
Tenure status, %				
Owner	65,1	65,9	67,0	71,2
Rented	29,2	26,2	27,6	25,5
Other	5,7	7,9	5,4	3,2

Cottages

	2015	2020	2024	2025
Åland	8 471	8 561	8 560	8 565
Region, %				
Mariehamn	1,0	1,0	1,0	1,1
Rural districts	68,4	68,3	67,9	67,9
Archipelago	30,5	30,7	31,1	31,0

Trade and Industry



Turnover in trade and services 2025

572 MEUR

Guest nights in hotels 2025

226 000



Goods exported by vessels 2025

210 580 tons

Active farms 2025

319



Forestry, delivery value 2025

6,7 MEUR

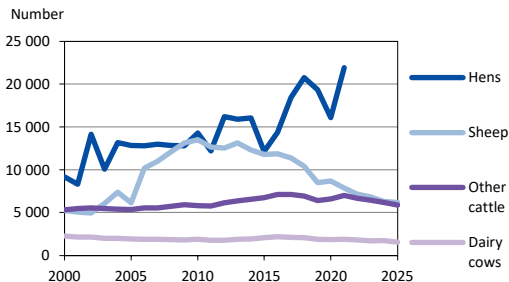
Agricultural production 2025

Product	Tons	1 000 EUR
Total	..	32 100
Milk	14 000	6 500
Beef	680	2 570
Mutton	50	220
Eggs	310	850
Wheat	5 900	1 060
Barley, oats	1 040	230
Rye	710	140
Table potatoes	170	490
Onions	6 090	4 210
Chinese cabbage, head lettuce	210	380
Apples	5 530	8 670
Other	..	6 960
Active farms	319	
Arable land, hectares	13 700	
- of which used for ecological production	2 700	

Agricultural subsidies 2025

15,5 MEUR

Livestock 2000-2025, number of animals



Note: As of 2022, data on number of hens are not available.

Forestry, roundwood production 2025

	1 000 m ³	1 000 EUR
Total	203	6 711
Logs	51	2 822
Pulp	152	3 889

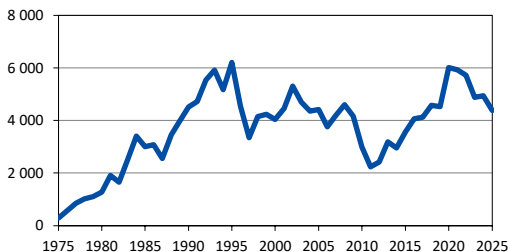
Fishing, total catch 2025

	Tons	1 000 EUR
Total	7 580	2 899
Baltic herring, sprat	7 369	2 107
Cod	11	48
Whitefish	15	115
Perch	78	229
Pike-perch	18	132
Pike	12	31
Other species	78	232
Crayfish	..	6
Farmed fish	5 649	38 992
Number of fish farms	27	

Note: The totals include fish sold by fishermen directly to consumers.

Roe deers shot 1975-2025

Number



Seals shot 2025

237

Turnover in manufacturing industry by industry, MEUR

Industry	2019	2024	2025 ¹⁾
Manufacturing	342	516	526
Food industry	169	328	342
Manufacturing of wood products	22	19	19
Chemical industry	58	65	67
Metal industry	15	19	18
Other manufacturing	78	85	80

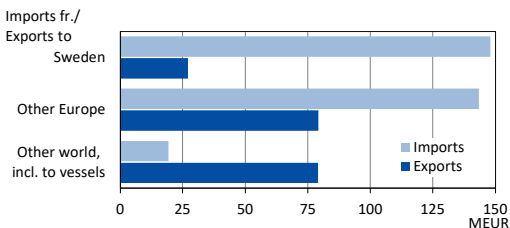
1) Preliminary figures

Turnover in trade and services by industry, MEUR

Industry	2019	2024	2025 ¹⁾
Total	535	563	572
Wholesale trade	211	202	210
Retail trade	261	288	289
Hotels and restaurants	63	73	73

1) Preliminary figures

Imports and exports of goods 2024, MEUR



Financial system, MEUR

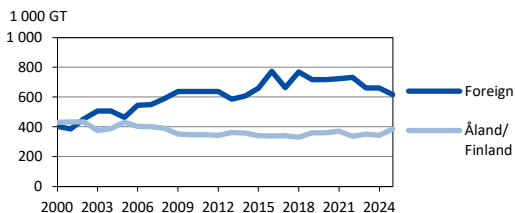
	2015	2020	2025
Net interest margin	56	64	105
Net fee and commission income	39	69	88
Net trading and investment income	10	3	2
Other income	2	23	40
Total expenses	79	109	160
Impairments on loans and receivables	-4	6	1
Total assets	4 955	6 622	5 824
Own funds	229	327	409

Merchant fleet by flag of vessels 2025

Flag Type of vessel	Number	1 000 GT
Total	38	999
Åland/Finland	25	385
Passenger vessels	8	320
Archipelago ferries	7	10
Ro-ro cargo vessels	7	53
Other vessels	3	2
Foreign	13	614
Passenger vessels	1	12
Ro-ro cargo vessels	2	15
Tanker vessels	10	587

Note: Includes vessels owned by companies registered in Åland only

Merchant fleet 2000-2025 by flag of vessels



Goods imported by vessels 2025

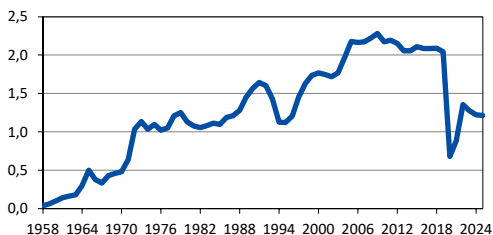
179 935 tons

Arriving vessels

Destination	1990	2000	2010	2020	2025
Total	4 790	8 308	8 088	6 420	6 837
Mariehamn	3 975	4 831	5 364	2 351	3 070
Eckerö	815	1 169	973	670	1 048
Långnäs	..	2 308	1 751	3 399	2 719

Travellers arrived 1958-2025

Number,
millions



Travellers arrived by country and type of transport, 1 000 persons

	2000	2010	2020	2025
Total	1 769	2 173	679	1 213
From Finland	437	335	203	325
Archipelago ferries	77	56	39	39
Others	360	279	164	286
From Sweden	1 332	1 828	466	876
On cruise liners	569	941	148	230
Other travellers	762	887	318	646
Other countries	..	10	11	12

Arrived vehicles 2025

167 718

Marinas

	2000	2010	2020	2025
Marinas	20	20	20	21
Capacity	1 396	1 317	1 337	1 324
Nights spent	30 165	30 324	21 358	29 148

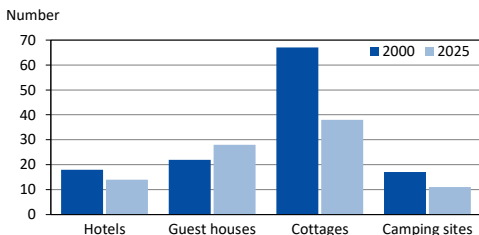
Accommodation, guest nights

	2000	2010	2025
Total	562 571	423 893	404 550
Hotels	187 991	169 754	225 919
Guest houses	42 680	41 836	40 719
Cottages	193 438	133 160	70 784
Camping sites	138 462	79 143	67 128
Home country of the guests			
Åland	..	496	7 865
Finland	251 934	177 697	194 335
Sweden	255 876	192 838	149 613
Norway	9 466	4 076	3 286
Denmark	5 808	2 365	3 077
Other Nordic countries	599	190	578
Germany	18 050	12 700	13 699
Estonia	1 122	7 390	4 907
Latvia	993	3 639	4 596
Russia	1 601	5 402	143
Lithuania	144	1 402	2 205
Switzerland	2 088	1 750	3 507
Great Britain	1 655	1 203	1 906
Rest of Europe	11 238	10 491	11 390
USA	828	656	1 894
Rest of world			
incl. unknown	1 169	1 598	1 549

Note: Establishments with more than 4 rooms or cottages.

Up to 2010, the figures of Åland were included in the figures of Finland.

Number of accommodation establishments



Note: Establishments with more than 4 rooms or cottages.

Number of vehicles

	2000	2010	2025
Private cars	13 979	19 240	27 057
Private cars/1 000 inhabitants	542	687	877
Lorries	403	674	1 084
Vans	2 805	3 915	5 810
Buses	41	43	69
MC:s	619	1 373	2 250
Tractors	3 277	3 637	4 949

Imported used cars 2025 1 456

Roads, km

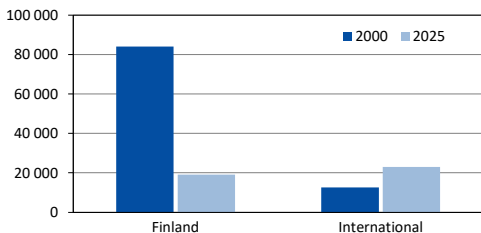
	1980	2010	2025
Public roads	888	1 026	1 096
- of which paved roads	348	814	983
Bicycle roads, paved	..	76	188

Number of passengers and vehicles on the archipelago ferries, 1 000 pcs

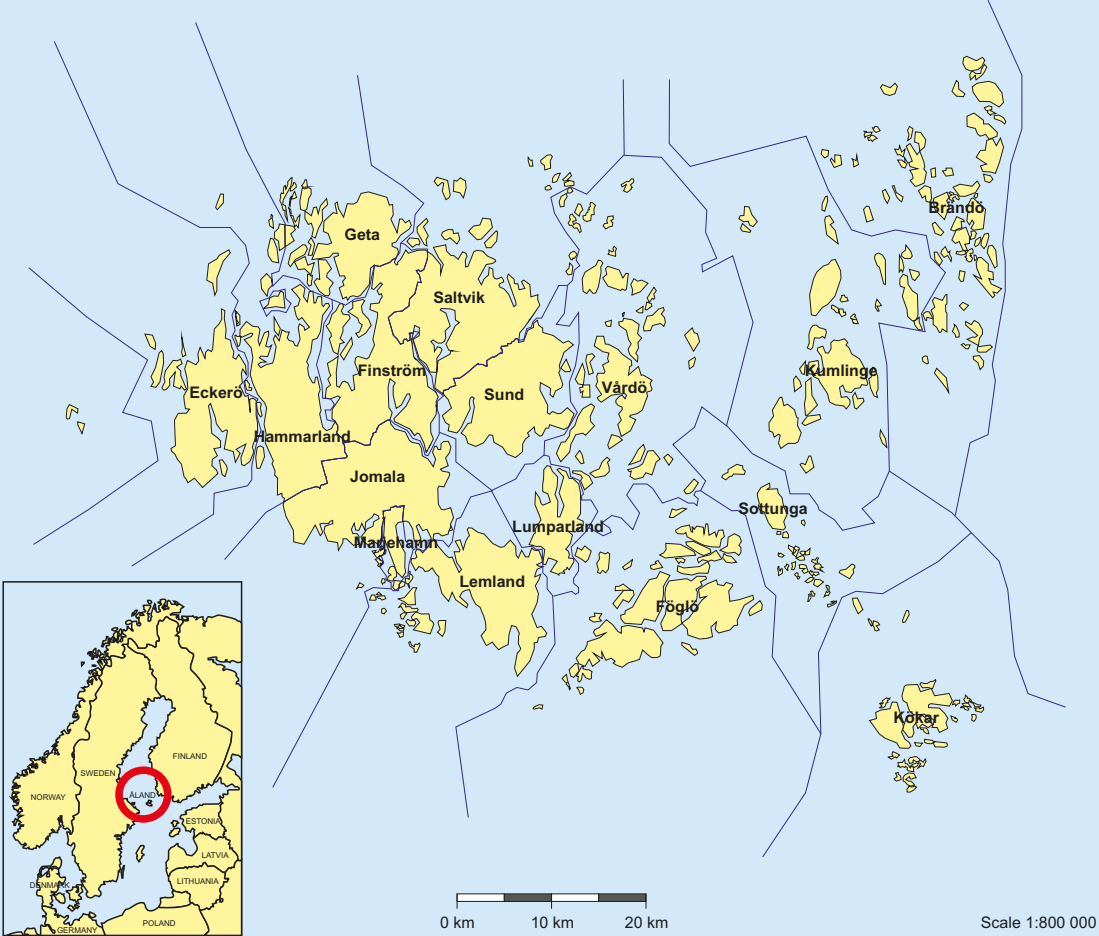
	1990	2010	2025
Passengers	930	1 038	1 008
Vehicles	441	573	661

Air traffic

Passengers



Geography and Municipalities of Åland



Economy



GDP per capita 2023

41 600 PPS €

**Taxable income of
private individuals
2024**

894 MEUR



LTD



Unemployment 2025

5,2 %

Inflation 2025

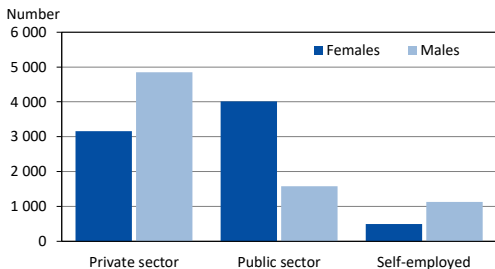
-0,2 %



**Enterprises with more
than four employees
2025**

261

Employed in Åland by sector and sex 2023



Note: Jobs on Åland ships are included.

Employed in public sector of all employed 2023 36 %

Employed persons 2023

Industry	Total	F	M	%
Total	14 423	7 244	7 179	100
Agriculture	511	127	384	4
Manufacturing	1 176	283	893	8
Construction	988	74	914	7
Trade, hotels	1 890	939	951	13
Transport	1 321	341	980	9
IT and communication	641	192	449	4
Financial services	762	389	373	5
Prof., scient., tech.	971	510	461	7
Public services	4 875	3 789	1 086	34
Personal services	858	502	356	6
Unknown	430	98	332	3
Employment rate, %	77,9	78,7	77,1	

Employed persons 2023, %

Region		Primary industries	Industry, construct.	Services
Mariehamn	Total	0	11	86
	Females	0	4	94
	Males	1	19	77
Rural district	Total	4	18	74
	Females	2	6	91
	Males	6	30	58
Archipelago	Total	15	10	70
	Females	9	3	86
	Males	22	16	56
Åland	Total	4	15	78
	Females	2	5	92
	Males	5	25	65

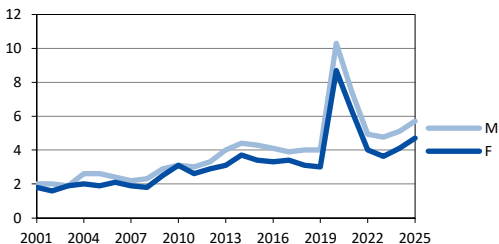
Note: Primary industries include agriculture, forestry and fishery.

Unemployment rate 2025

5,2 %

Unemployment 2001-2025, %

Per cent



Unemployed more than 6 months 2025

2,6 %

Income and taxes of private individuals 2024, MEUR

	Total	Females	Males
Wage income	613	285	328
Pensions, social benefits subj. to tax	252	119	133
Other earned income	105	30	74
Capital income	152	50	102
Tax-exempt allowances	6	1	5
Total income	1 128	486	642
Taxable earned income	789	339	449
Taxable capital income	106	37	69
Income taxes, state taxation	74	22	51
Municipal income tax	118	50	68
Church tax	8	3	4
Other charges	14	6	8
Taxes and charges, total	215	82	133
Income minus taxes	913	404	510
Taxes as share of total income, %	19,0	16,9	20,6

Income by sex 2024



Mean disposable income of
household dwelling units 2024

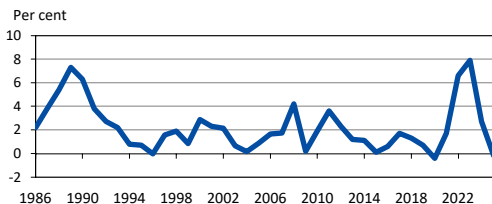
57 743 euro

Monthly earnings in the private sector 2024

Occupational group	Total	F	M
Total	4 098	3 793	4 261
Legislators, senior managers	7 321	6 340	7 830
Professionals	4 912	4 548	5 116
Technicians, associate professionals	4 276	3 936	4 451
Clerks	3 626	3 531	3 799
Service, sales, care workers	3 191	3 031	3 324
Agriculture, forestry, fishery workers	3 485	2 592	3 664
Craft and related trades workers	3 508	2 792	3 547
Plant and machine operators, assemblers	3 161	3 127	3 167
Elementary occupations	2 629	2 397	2 823

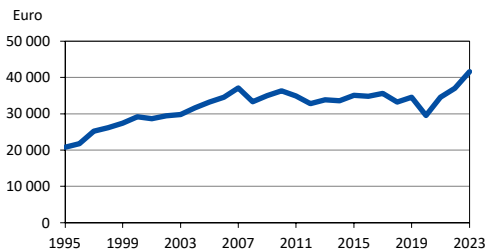
Monthly earnings in the public sector 2023

Occupational group	Females			Males		
	Gov. Ål	Munic.	State	Gov. Ål	Munic.	State
Total	3 972	3 457	3 859	4 613	3 793	4 294
Legisl., senior managers	5 495	4 524	..	5 978	5 899	..
Professionals	4 888	3 830	5 245	5 664	4 184	5 271
Techn., ass. profession.	3 729	3 595	3 469	4 198	3 961	3 879
Clerks	3 004	3 022
Service, sales, care workers	3 425	3 254	..	3 813	3 188	-
Craft and rel. trades work.	-
Plant, mach. op., assembl.	-	-	-	3 471
Elem. occup.	2 650	2 532	..	2 785	2 548	..

Consumer price index 1986-2025, annual percentage change

Gross domestic product 2023

Industry	MEUR	%
Agriculture	41	2,9
Manufacturing	135	9,7
Construction	65	4,7
Trade, hotels	106	7,5
Shipping	254	18,2
Other transports	39	2,8
Information and communication	51	3,6
Financial services, real estate	275	19,7
Professional, scientific, technical activities	39	2,8
Public services	14	1,0
Personal services	63	4,5
Industries, total	1 082	77,3
Government services	303	21,6
Non-profit institutions	15	1,1
GDP at basic price	1 400	100,0
Indirect taxes	191	
Subsidies	-43	
GDP at market price	1 549	

GDP per capita 1995-2023, PPS euro

Note: Purchasing Power Standards, PPS, is an artificial currency eliminating differences in price levels between countries.

GDP, change 2022-2023

5,2 %

Enterprises

Enterprises 2025

Industry	Total	Number of employees					Un- known
		0-4	5-19	20-99	100+		
Total	2 681	2 420	191	58	10	2	
Primary ind.	187	170	15	2	-	-	
Manufacturing	243	208	21	12	2	-	
Construction	476	440	28	8	-	-	
Trade, hotel	548	471	65	11	1	-	
Transport	262	222	22	13	5	-	
Finance, real estate	627	591	28	7	1	-	
Public services	338	318	12	5	1	2	

Turnover and profit of enterprises in industry and commerce by industry 2024, MEUR

Industry	Turnover	Profit/Loss
Manufacturing	663	40
Construction	171	11
Wholesale trade	95	10
Retail trade	291	7
Sea transport	780	62
Other transport	98	4
Hotels and restaurants	71	5
Business services	218	15
Personal services	44	10

Ten largest enterprises by number of employees in Åland 2024

Enterprises	Industry	Employees	Turnover MEUR
Viking Line Abp	Transport	2 016	421
Crosskey Banking Solutions Ab	Information, communication	290	44
Ålandsbanken Abp	Finance, insurance	285	..
Optinova Godby Ab	Manufacturing	196	26
Rederi Ab Eckerö	Transport	145	50
Trailer-Link Ab	Transport	145	26
Åland Post Ab	Transport	143	30
Ålands penning-automatförening	Arts, entertainment, recreation	129	11
Orkla Finland Ab	Manufacturing	112	66
Ab Mathias Eriksson	Trade	110	49

Public Sector



Municipal operating costs 2024

6 863 €/inhabitant

Households with municipal home-help services 2025

596



Recipients of parental allowances 2025

861

Students outside Åland 2025

1 328



Offences against the criminal code 2024

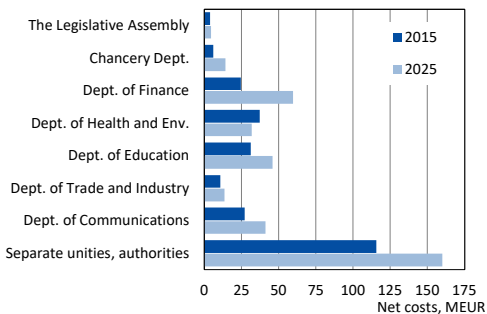
1 967

Published books 2025

50



Budget follow-up of the Government of Åland, MEUR



Government of Ål, personnel costs 2025 130 MEUR

Finances of the municipalities 2024

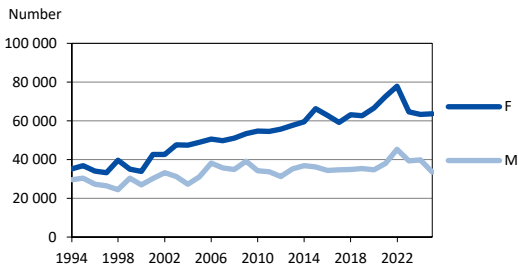
	MEUR	%
Expenditure by sector	267	100,0
General administration	6	2,3
Social welfare	82	30,8
Education and culture	104	38,9
Other services	75	28,1
Comparative figures		
Taxable income, EUR/inhabitant		24 509
Taxation, per cent		17,5
Tax revenue, EUR/inhabitant		4 151
Government of Åland subsidies, EUR/inhabitant		1 522
Operating revenue, EUR/inhabitant		1 383
Operating costs, EUR/inhabitant		6 863
Net investments, EUR/inhabitant		485
Loan stock, EUR/inhabitant		1 286
Cash balance, EUR/inhabitant		1 279

Health and medical care 27.9.2024-26.9.2025

	Total	Females	Males
In-patient care			
Somatic special care			
Beds	101	.	.
Patient days	22 282	10 984	11 298
Psychiatric care			
Beds	14	.	.
Patient days	3 380	1 345	2 035
Health care outside Åland (2025)			
Patient days	4 567
Out-patient visits			
Primary care	113 494	65 285	48 209
Psychiatric care	17 709	10 127	7 582
Somatic special care	65 649	35 751	29 898
Health care outside Åland (2025)	3 888
Dental care (2025)	16 132

*Note: The figures are from the Åland Health and Medical Care Organisation.
Somatic special care includes rehabilitation and geriatric care.*

Sickness allowances 1994-2025, days covered by sex of the recipients



Recipients of sickness allowances 2025

1 852

Parental allowance

	2015		2025	
	F	M	F	M
Number of recipients	473	386	427	434
Allowance days	69 857	10 466	59 107	19 914
Allowance paid, 1 000 EUR	4 777	862	4 885	1 997
Euro/day	68,38	82,36	82,64	100,31

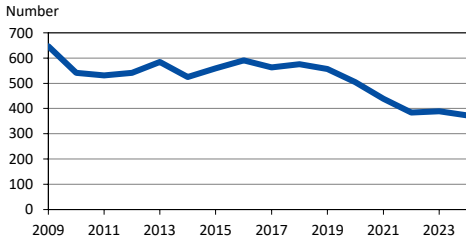
Child home care allowance

	2010	2020	2025
Number of recipients	787	865	555
Females	746	739	490
Males	41	126	65

Note: Parents to children under 3 years of age not using municipal child care are granted child home care allowance.

Abortions 2024

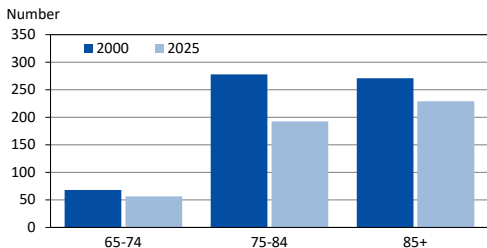
70

Recipients of income support 2009-2024

Clients in outpatient addiction care 2025

213

Households receiving municipal home-help services by age



Elderly care 2025, number of clients

	Total	Age		
		65-74	75-84	85-
Åland	627	98	226	303
Females	372	45	122	205
Males	255	53	104	98
Elderly centers	86	18	34	34
Females	58	10	22	26
Males	28	8	12	8
In service homes for elderly	311	25	87	199
Females	209	15	51	143
Males	102	10	36	56
Cared for by related person	230	55	105	70
Females	105	20	49	36
Males	125	35	56	34

New pension beneficiaries 2024 350

Number of pension beneficiaries

	2010		2025	
	F	M	F	M
Pension beneficiaries, total	3 604	3 136	4 485	3 853
Old-age pension	2 903	2 551	4 020	3 531
Invalidity pension	422	444	362	276

Education

Child day care

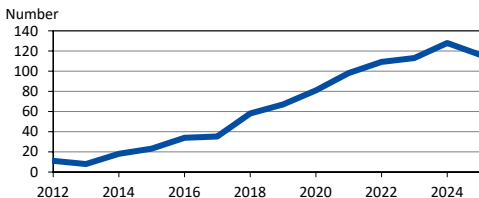
	2000	2025
Day nurseries	47	38
Children	1 518	1 409
In day nurseries	1 291	1 406
In family day care	227	3
Percentage of children in child day care	59,9	71,6
0-1 year	9,5	15,7
2-3 years	57,1	84,3
4-6 years	90,5	92,5

Comprehensive school 2025

	Schools	Pupils
Total	22	3 130
Junior level	21	2 057
Senior level	8	1 073

Note: Seven schools have both junior and senior level education.

Home-schooled children



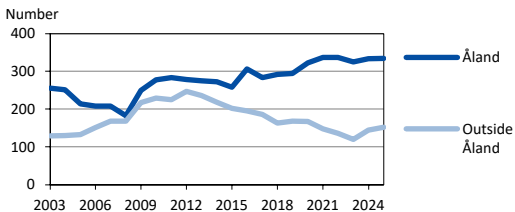
Students in upper secondary and other education 2025

	Total	F	M
Total	1 131	552	579
Ålands lyceum	465	265	200
Ålands yrkesgymnasium	632	269	363
Ålands folkhögskola	34	18	16
Home country			
Åland	1 082	534	548
Finland	23	7	16
Sweden	7	3	4
Other	19	8	11

Students at Åland University of Applied Sciences autumn 2025

	Total	F	M
Total	486	220	266
Field of education			
Business, admin., law	119	81	38
Info., comm. techn. (ICT)	84	20	64
Technology	108	11	97
Health and welfare	81	65	16
Services	94	43	51
Home country			
Åland	334	169	165
Finland	96	34	62
Sweden	44	15	29
Other	12	2	10

Students at Åland University of Applied Sciences 2003-2025 by residence



Students outside Åland 2025

	Total	F	M
Total	1 328	792	536
Location			
Finland	539	306	233
Sweden	740	460	280
Other Nordic countries	17	8	9
Other countries	32	18	14
Level			
Upper secondary level	201	130	71
Universities incl. polytechn.	1 073	632	441
Folk high schools, other	54	30	24

Libraries

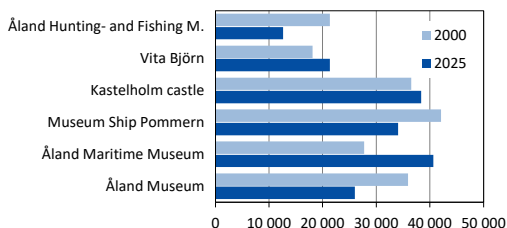
	2000	2010	2025
Holdings of media, 1 000 pcs	333	326	267
Home loans, 1 000 pcs	486	476	359
Volumes lent/inhabitant	18,9	17,0	11,7
Visits, 1 000 pcs	..	312	242

Library borrowers 2025 70 % females, 30 % males

Published books

	2000	2010	2025
Books total	67	54	50
Specialised literature	62	41	33
Fiction	5	9	10
Children's and youth literature	-	4	7

Museums, visits



Parishes

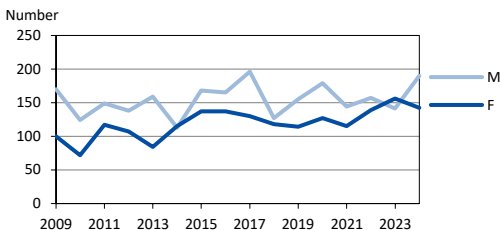
	2000	2010	2024
Number of parishes	13	10	8
Members of parishes	23 801	21 205	20 037
Attendants in services	62 080	44 345	23 091
Baptisms, number	239	218	129
People in preparation for confirmation, number	267	321	202

Note: Evangelic-Lutheran national parishes

Offences against the criminal code known to the authorities 2024

	Offences total	Suspected persons		
		Total	F, %	M, %
All offences	1 967	1 285	19,4	80,6
Property offences	699	218	30,3	69,7
Offences against persons	242	184	16,3	83,7
Sexual offences	72	55	-	100,0
Public offences	96	69	24,6	75,4
Traffic offences	496	452	22,3	77,7
Other offences	362	307	11,4	88,6

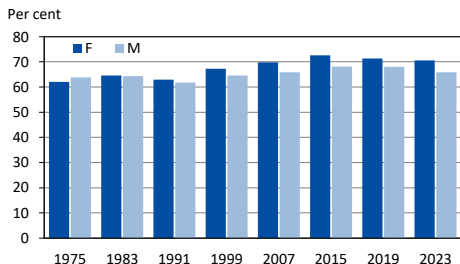
Victims of crimes by sex 2009-2024



Participation, municipal election 2023

64,0 %

Legislative Assembly elections, participation by sex, %



Legislative Assembly election 2023

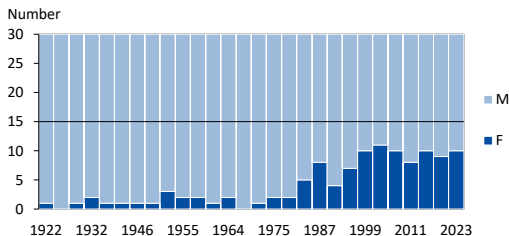
Political group	Votes		Members elected		
	Number	%	Tot.	F	M
Total	14 044	100	30	10	20
Åland Centre Party	2 983	21	7	3	4
Åland Liberals	4 204	30	9	3	6
The Moderates	1 761	13	4	1	3
Independents	2 150	15	5	-	5
Åland Soc. Dem. Party	1 801	13	4	3	1
Future of Åland	403	3	-	-	-
Sustainable Initiative	720	5	1	-	1
Jannik Svensson	22	0	-	-	-
Speaker	Jörgen Pettersson (Åland Centre Party)				

Candidates, Legislative Assembly election 2023 205

The Government of Åland 2025

Political group	Members	F	M
Total	7	4	3
Åland Liberals	3	2	1
Åland Centre Party	2	1	1
Åland Soc. Dem. Party	2	1	1
Head of government	Katrin Sjögren (Åland Liberals)		

Members elected for the Legislative Assembly by sex 1922-2023



About Åland

Åland is a home-ruled, demilitarized and Swedish-speaking territory belonging to Finland. The autonomy originating from 1922 grants Åland legislative power in several areas. The popularly elected Legislative Assembly of Åland (Lagtinget) appoints the Government of Åland (Landskapsregeringen), which holds the executive power.

The competence areas of the Government of Åland are health and medical care, upper secondary and tertiary education, trade and industry, local road and ferry traffic, the police, the postal service, radio and television as well as culture and museums.

There are 16 municipalities in Åland and 6 of these are situated in the archipelago. The municipal sector is responsible for areas such as comprehensive school, child care and elderly care.

Over the last decades, Åland has developed into a service economy. Concurrently, the population has increased and the contribution of immigrants expanded.

Åland has its own flag since 1954 and stamps of its own since 1984. Starting in 1970, Åland is represented in the Nordic Council and participates in the work of the Nordic Council of Ministers. Åland joined the European Union in 1995, but remains outside the EU tax union.

Åland in figures is produced by Statistics and Research Åland (ÅSUB).

ÅSUB's main tasks are to function as the official statistics authority of the Åland Islands and to conduct research and surveys. ÅSUB produces statistics in several subject areas including population, public finance, manufacturing, education, social welfare, health and medical care, environment and elections. All statistics as well as all reports and other information published by ÅSUB are available on the web site **www.asub.ax**.

info@asub.ax

Telephone

+358 (0)18 25490

Address

P.O.B. 1187

AX-22111 Mariehamn

ISSN 1457-1617 (print)

ISSN 2737-0739 (online)

